



# Itinerary

## Pretoria to Cape Town Route

### Day 1:

- 07:50 – 08:30** Register and check-in at **Pretoria Station**.  
*Enjoy pre-departure snacks and drinks.*
- 08:30** Boarding starts Butlers usher guests to their suites.  
*Suite orientation done by butlers.*
- 12:00 – 14:00** First lunch sitting  
**14:00 – 16:00** Second lunch sitting
- 15:30** High tea served in the Lounge Car.
- 17:10** **The Blue Train** arrives at Kimberley station.  
*Guests disembark and assemble at the railway museum from where they will be ushered to the bus, which will be taking them to the centre of Kimberley to join an old tram for a ride down to the mine.*
- 17:45** Guests arrive at the Open Mine Museum for a tour of the mine.  
*Guests are first taken to the Diamond Die to try their luck to win a diamond, after which they will visit several interesting and historical sites as well as taken onto an enclosed ramp on the edge of the Kimberly hole.*
- 18:35** Guests depart from the Open Mine Museum for Kimberley station.  
*At Kimberley station where they are greeted with a glass of sherry. The sherry glass with The Blue Train logo on is a memento for them to keep.*
- 19:05** **The Blue Train** departs Kimberley station for Cape Town.

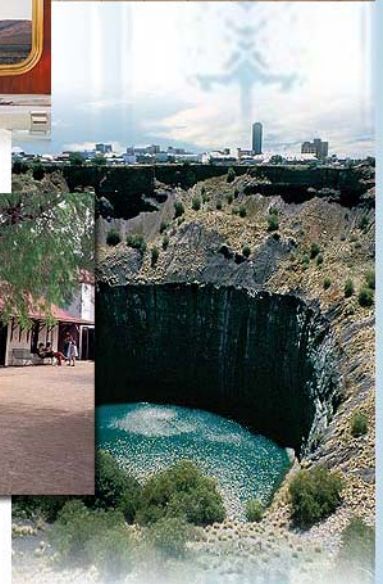
*After this exciting tour, guests are welcome to refresh themselves and enjoy pre-dinner drinks served at any one of our lounges. Remember, dinner is an elegant affair and men are requested to wear a jacket and tie or dress in traditional attire and ladies in elegant evening or traditional wear.*

- 19:30** First dinner sitting
- 21:15** Second dinner sitting commences

### Day 2:

(next morning)

- 07:00 - 10:00** Breakfast served (first come first serve basis).  
Otherwise breakfast is served in-suite at the guests' request.
- 12:00** **The Blue Train** arrives at **Cape Town** station.  
*Butlers usher guests to the Station Lounge*



PRETORIA

Klerksdorp  
Bloemhof  
Kimberley

De Aar

Beaufort West

Laingsburg  
Matjiesfontein  
Worcester

CAPE TOWN



**Thank you for joining us  
on this memorable experience!**



**THE BLUE TRAIN**  
A WINDOW TO THE SOUL OF SOUTH AFRICA

